

e-book

Hamster Coding

Scratch 17

Written by ConceptOn



How to Use

This manual is designed for the educational utilization of the Hamster robot.

- Please use this manual as on-screen instructions when teaching the Hamster class.
- The contents are easy to understand. Just read them before the class.
- Worksheets can be downloaded from the Robomation website.
- This manual can be used to ensure the best lesson plan.
- For more information, contact us at 7concepton@daum.net.



Hamster Coding

Scratch 17

Let's get started with Hamster coding with the Scratch program!

The use of the Scratch programs will make coding more interesting!

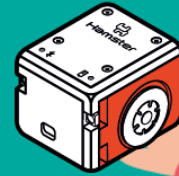


Today's Activity

Division	Description	Time
Introduction	Explore the problem. We need a police Hamster that guards our home!	5min
Development	Find a solution. Let's code by controlling Hamster sensors. Solve the problem. Let's command your Hamster to move according to a given mission.	30min
Conclusion	Review today's activities. Let's talk about what you have learned and enjoyed.	5min



Shall we try coding
for your Hamster to
guard
your house?



Get ready

First, let's find out what is needed for Hamster coding.



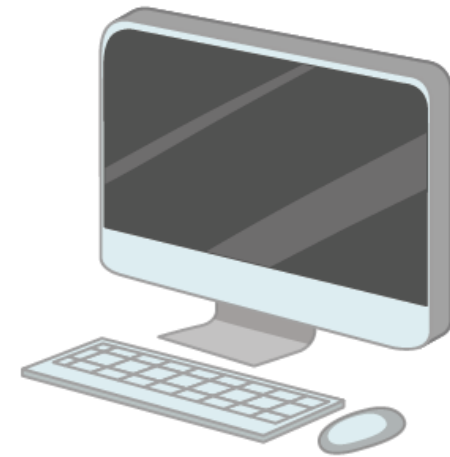
1 Hamster

4 Worksheet



2 Bluetooth Dongle

5 Writing supplies (pen and paper)

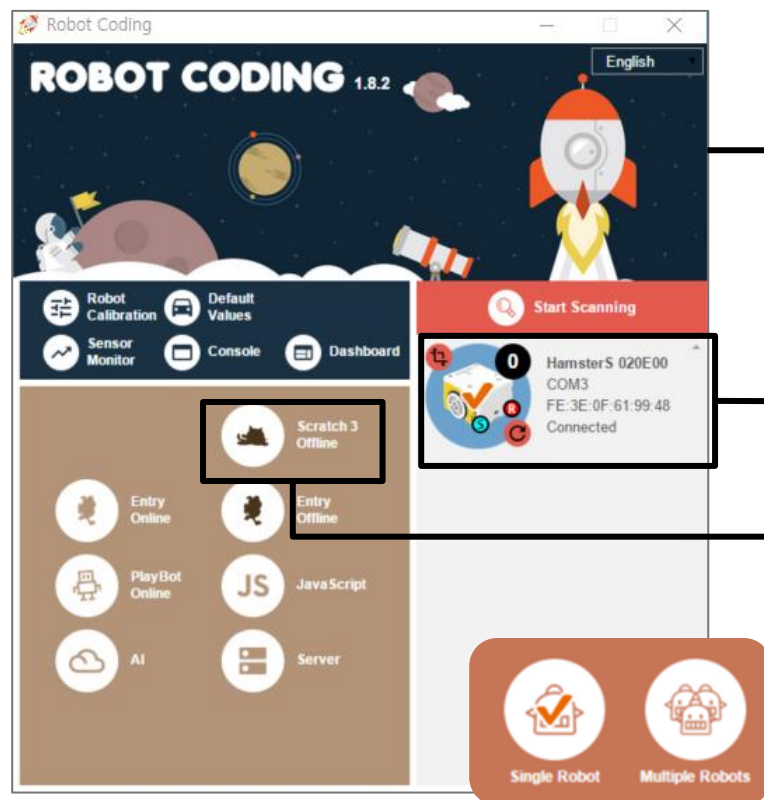


3 PC

6 Charging cable

Open the program

When opening the program, turn on Hamster and plug the Bluetooth Dongle into the USB port of your PC.



Open the program

1

Run the Robot Coding program.

2

Check if your Hamster robot is connected with the Bluetooth Dongle (through its LED light colors).

3

Click on Scratch 3 Offline.

4

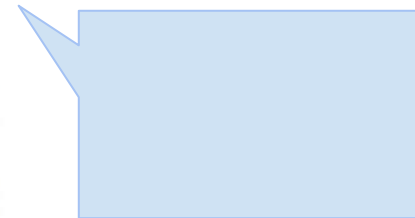
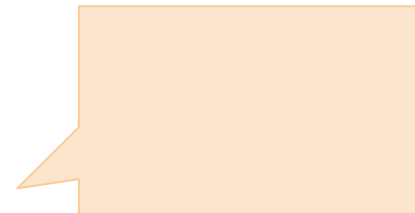
Click on "Single Robot" and then "New File."



Let's talk

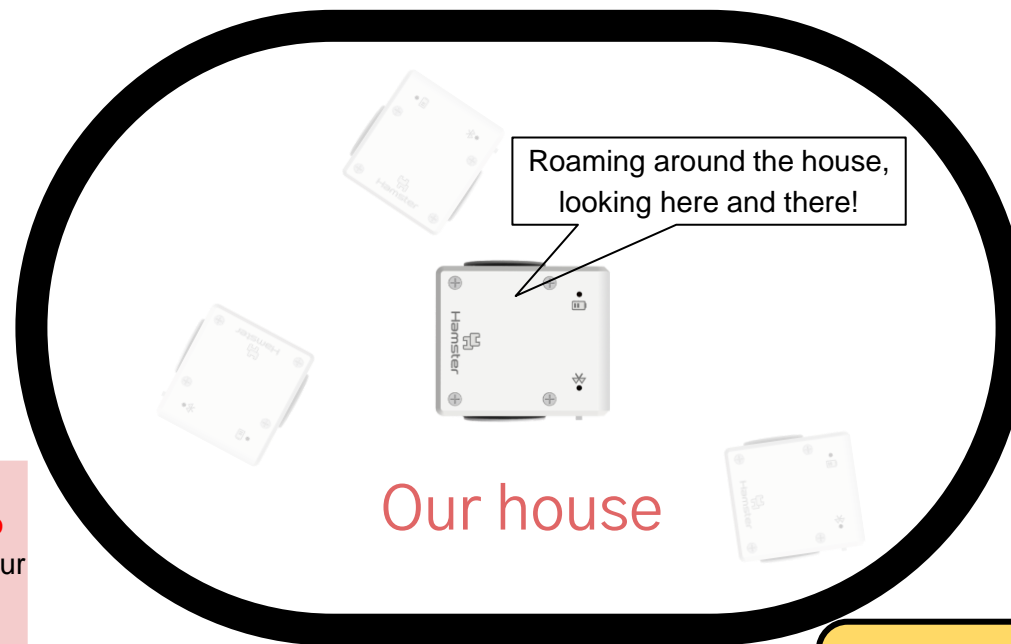
What should your Hamster do as a police officer?
Let's talk about it in the form of conditional statements.

If it encounters a thief,
Hamster will blow a
whistle!



Let's think

How can you allow your Hamster to patrol your house while roaming around?



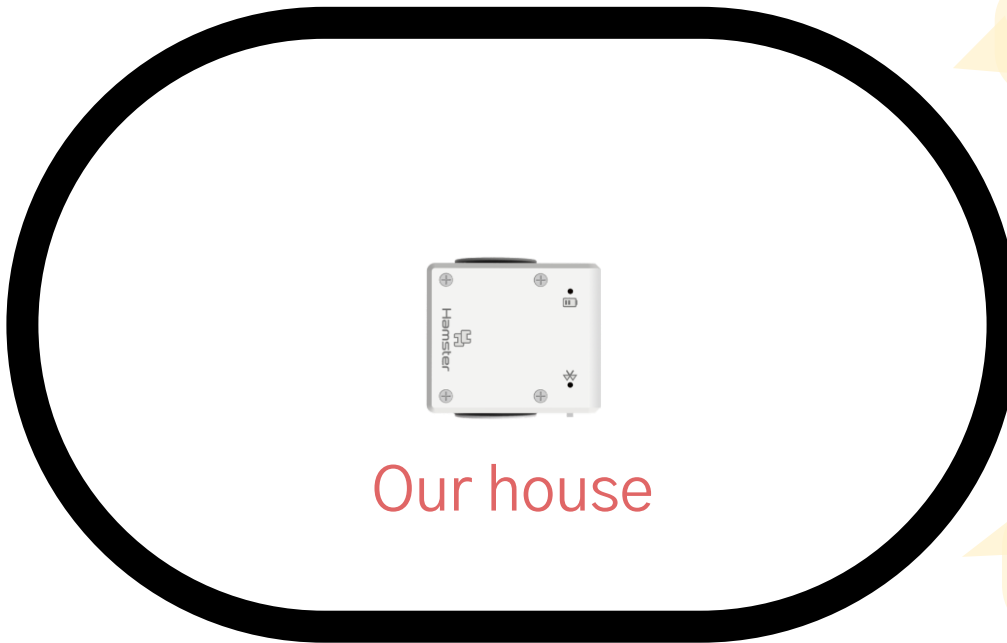
What Hamster should do
Continue to patrol inside our house!

What sensor can be used to make Hamster move around only within the black line?

Guess how?

Let's think of the code that makes Hamster patrol our house.

Preparations: Hamster, Worksheet



Measure the left and right floor sensor values

Set Hamster's movement speed

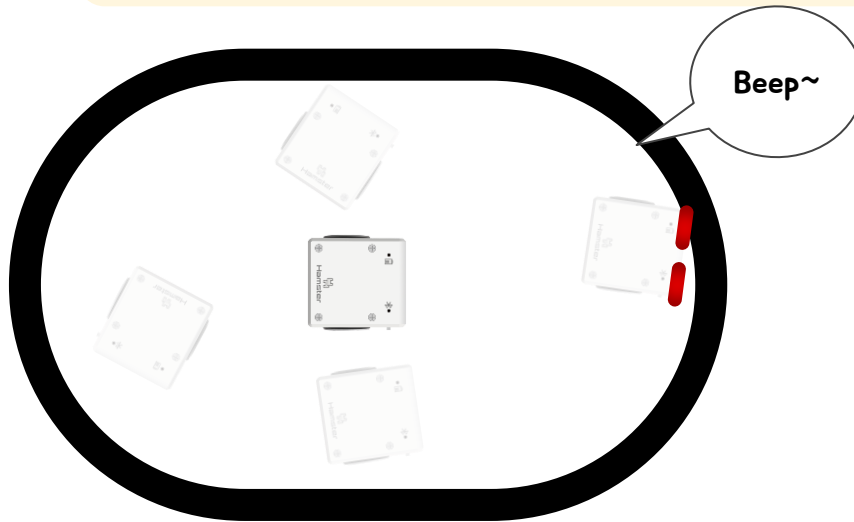
Allow the floor sensors to make a beep sound, turning on the red LED lights, when detecting the black color

Allow the floor sensors to back off when sensing the black color

Exercise 1

Let's write the code for Hamster to patrol our house.

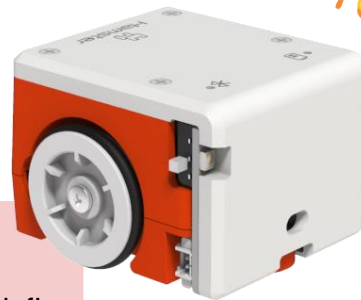
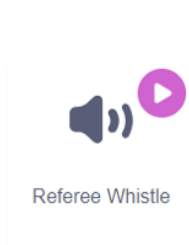
Preparations: Hamster, Worksheet



```
when clicked
  forever
    if (left floor < 20 or right floor < 20) then
      play sound beep 1 times
      set both led to red
      move backward 0.5 seconds
      turn left 0.5 seconds in place
    else
      set wheels to left: 30 right: 30
      clear both led
```

Let's think

How can you allow your Hamster to whistle when it encounters a thief?

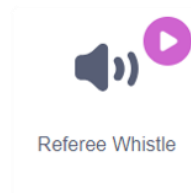


What Hamster should do
Whistle when it encounters a thief!

What sensor can be used to detect an object
in front of Hamster?

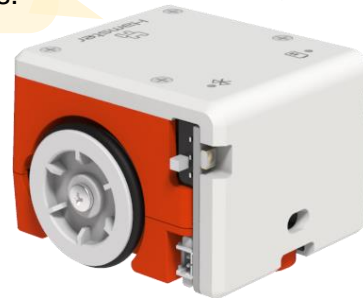
Guess how?

How can you allow your Hamster to whistle when it encounters a thief?



Measure the left and right proximity sensor values.

Allow the proximity sensors to whistle when detecting an object.



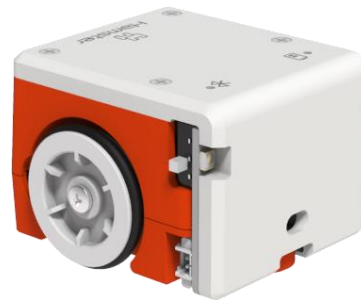
Thief!



Exercise 2

Let's write the code for your Hamster to whistle when it encounters a thief.

Thief!



```
when clicked
if (left proximity > 50 or right proximity > 50) then
  start sound Referee Whistle
  wait 1 seconds
else
  stop all sounds
```

Exercise 3

Let's write the code for Hamster to safely guard our house as a police officer.

1

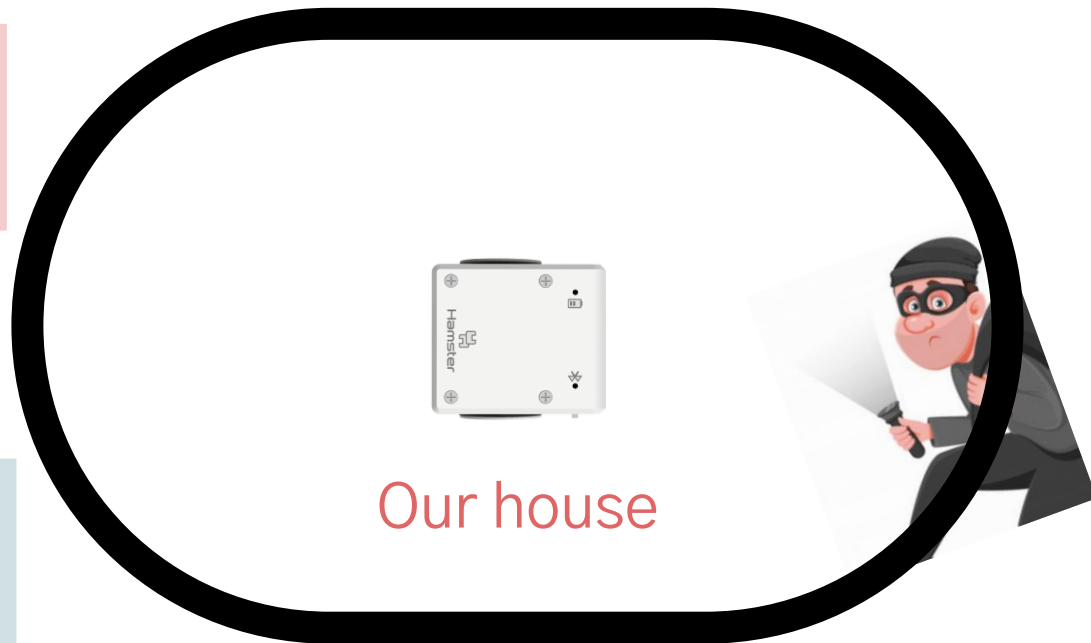
What Hamster should do

Continue to patrol inside our house!

2

What Hamster should do

Whistle when it encounters a thief!



Let's Review

- 😊 What did you learn today?
- 😬 Did you encounter any difficulties?
- 😍 What interested you the most about Hamster robot?

See you
again!

